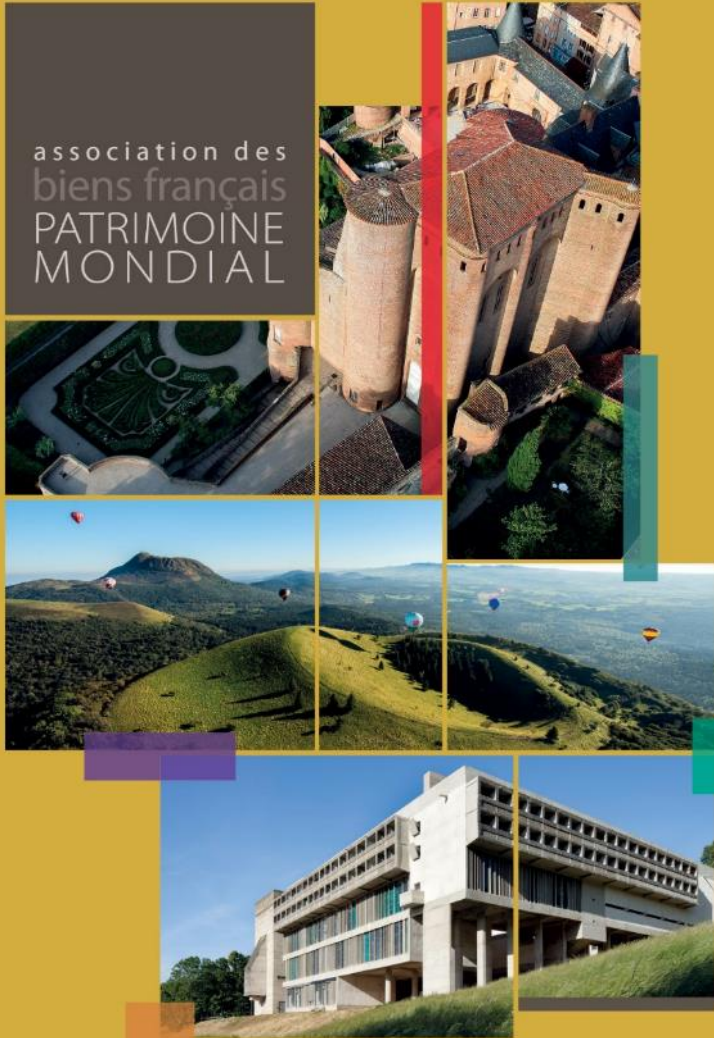


association des  
biens français  
PATRIMOINE  
MONDIAL

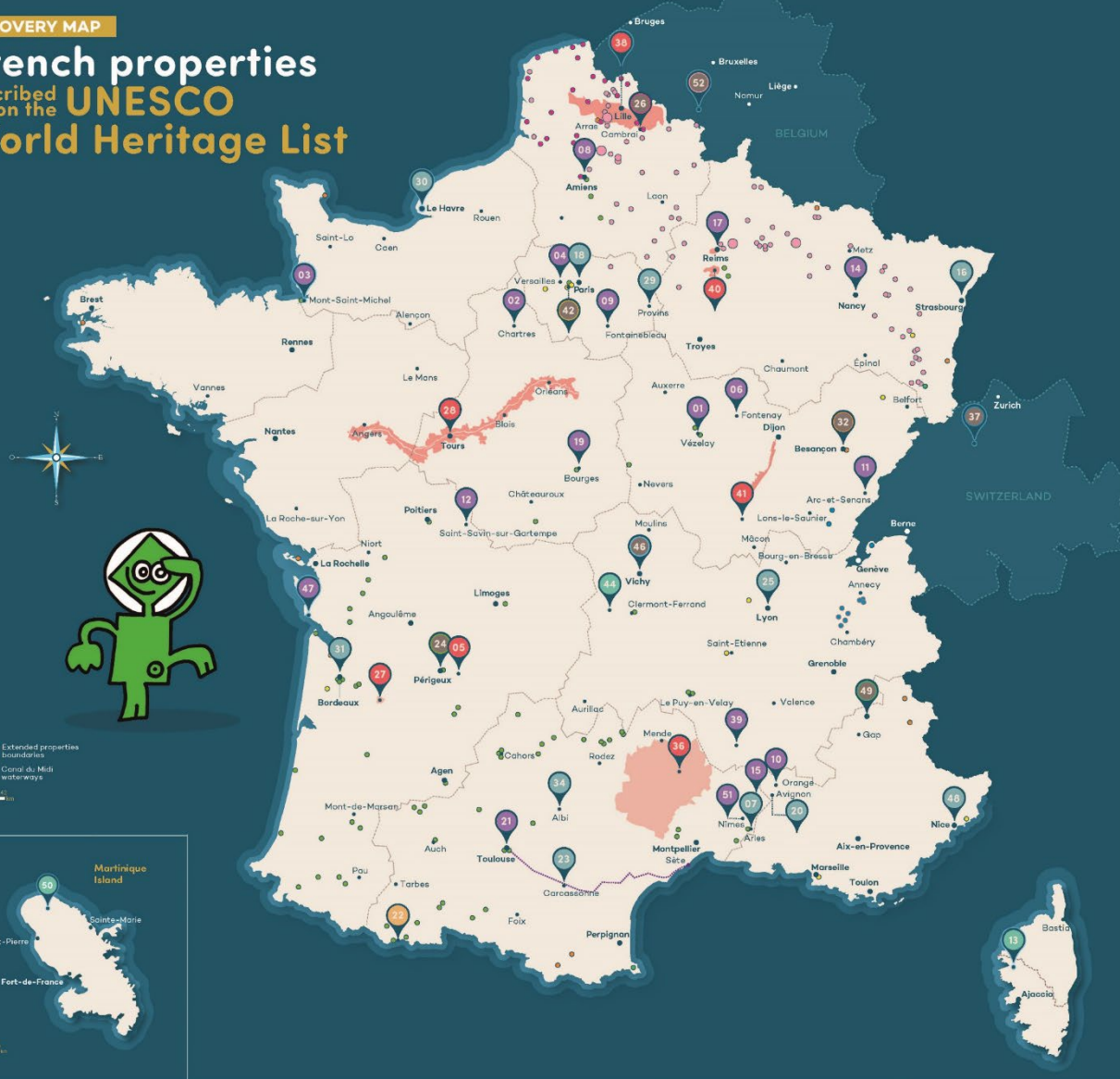


# THE FRENCH WORLD HERITAGE SITES ASSOCIATION CURRENT NEWS AND PROJECTS

9th European Meeting of World Heritage  
Associations  
10-11 October, 2024

Chloé CAMPO - de MONTAUZON

# French properties inscribed on the UNESCO World Heritage List



Extended properties boundaries  
Canal du Midi waterways

## List of inscribed properties

- MONUMENTS AND ENSEMBLES**
- 01 Basilica church and hill of Vézelay - 1979
  - 02 Chartres Cathedral - 1979
  - 03 Mont-Saint-Michel and its bay - 1979
  - 04 Palace and park of Versailles - 1979
  - 05 Cistercian Abbey of Fontenay - 1981
  - 06 Amiens Cathedral - 1981
  - 07 Palace and park of Fontainebleau - 1981
  - 08 Roman theatre and its surroundings and "Triumphal Arch" of Orange - 1981
  - 11 From the great saltworks of Salins-les-Bains to the royal saltworks of Arc-et-Senans: the production of open-pan salt - 1982 / Extension: 2009
  - 12 Abbey Church of Saint-Savin sur Gartempe - 1983
  - 13 Place Stanislas, de la Carrière and d'Alliance, Nancy - 1983
  - 14 Port du Gard - 1988
  - 17 Cathedral of Notre-Dame, the former Abbey of Saint-Remy and the Palace of Tau, Reims - 1991
  - 18 Bourges Cathedral - 1992
  - 19 Canal du Midi - 1996
  - 19 The decorated cave of Pont d'Arc - 2014
  - 47 Cordouan lighthouse - 2021
  - 61 The Maison Carrée of Nîmes - 2023

- CITIES & HISTORIC CENTERS**
- 07 Arles, Roman and Romanesque monuments - 1981
  - 16 Strasbourg, Grande-Île and Neustadt - 2008 / Extension: 2017
  - 18 Paris, banks of the Seine - 1991
  - 19 Historic centre of Avignon: Papal Palace, episcopal ensemble and Avignon Bridge - 1996
  - 21 Historic fortified city of Carcassonne - 1997
  - 25 Historic site of Lyon - 1998
  - 29 Provins, Town of Medieval Fairs - 2001
  - 30 Le Havre, the city rebuilt by Auguste Perret - 2008
  - 31 Bordeaux, Port of the Moon - 2007
  - 43 Episcopal city of Albi - 2010
  - 48 Nice, Winter Resort/Town of the Riviera - 2021

- EXTENDED PROPERTIES & CULTURAL LANDSCAPE**
- 09 Prehistoric sites and decorated caves of the Vézère valley - 1979
  - 27 Jurisdiction of Saint-Émilion - 1999
  - 28 Val de Loire, between Sully-sur-Loire and Chalonnes-sur-Loire - 2000
  - 38 The Causses and the Cévennes, Mediterranean agro-cultural landscape - 2011
  - 39 Nord-Pas de Calais mining basin - 2012
  - 40 Champagne Hillsides, Houses & Cellars - 2015
  - 41 The Climats, terroirs of Burgundy - 2015
  - 43 Taputapuātea - 2027

- SERIAL PROPERTIES**
- 14 The route of Santiago de Compostela in France - 1998
  - 71 monuments and ensembles and 7 walking trails
  - 26 Belfries of Belgium and France\* - 1999 / Extension: 2005
  - 64 components in 2 countries / 23 in France
  - 23 Fortifications of Vauban - 2008
  - 13 components in France
  - 27 Prehistoric Pile Dwellings around the Alps\* - 2011
  - 111 components in 6 countries / 11 in France
  - 43 The Architectural Work of Le Corbusier\* - 2016
  - 21 components in 7 countries / 10 in France
  - 48 The Great Spa Towns of Europe\* - 2021
  - 11 components in 7 countries / 1 in France
  - 49 Ancient and Primeval Beech Forests of the Carpathians and Other Regions of Europe\* - 2007 / Extension: 2011, 2012, 2013
  - 94 components in 18 countries / 3 in France
  - 25 Funerary and memory sites of the First World War (Western Front)\* - 2023 - 139 components in 2 countries / 96 in France

- NATURAL PROPERTIES**
- 13 Gulf of Porto: calanque of Piana, gulf of Girolata, scandola Reserve - 1983
  - 13 Lagoons of New Caledonia: diversity of reefs and associated ecosystems - 2008
  - 19 Pitons, cirques and remparts of Reunion Island - 2010
  - 44 Chaîne des Puys - Limagne fault tectonic arena - 2016
  - 49 French Austral Lands and Seas - 2019
  - 59 Volcanoes and Forests of Mount Pelée and the Pitons of Northern Martinique - 2023

- MIXED PROPERTIES**
- 22 Pynhènes - "Mont-Pendu" - 1997 / Extension: 1999
  - 10 In Henua Enata - The Marquesas Islands - 2024 - 7 components
- \* Transboundary property

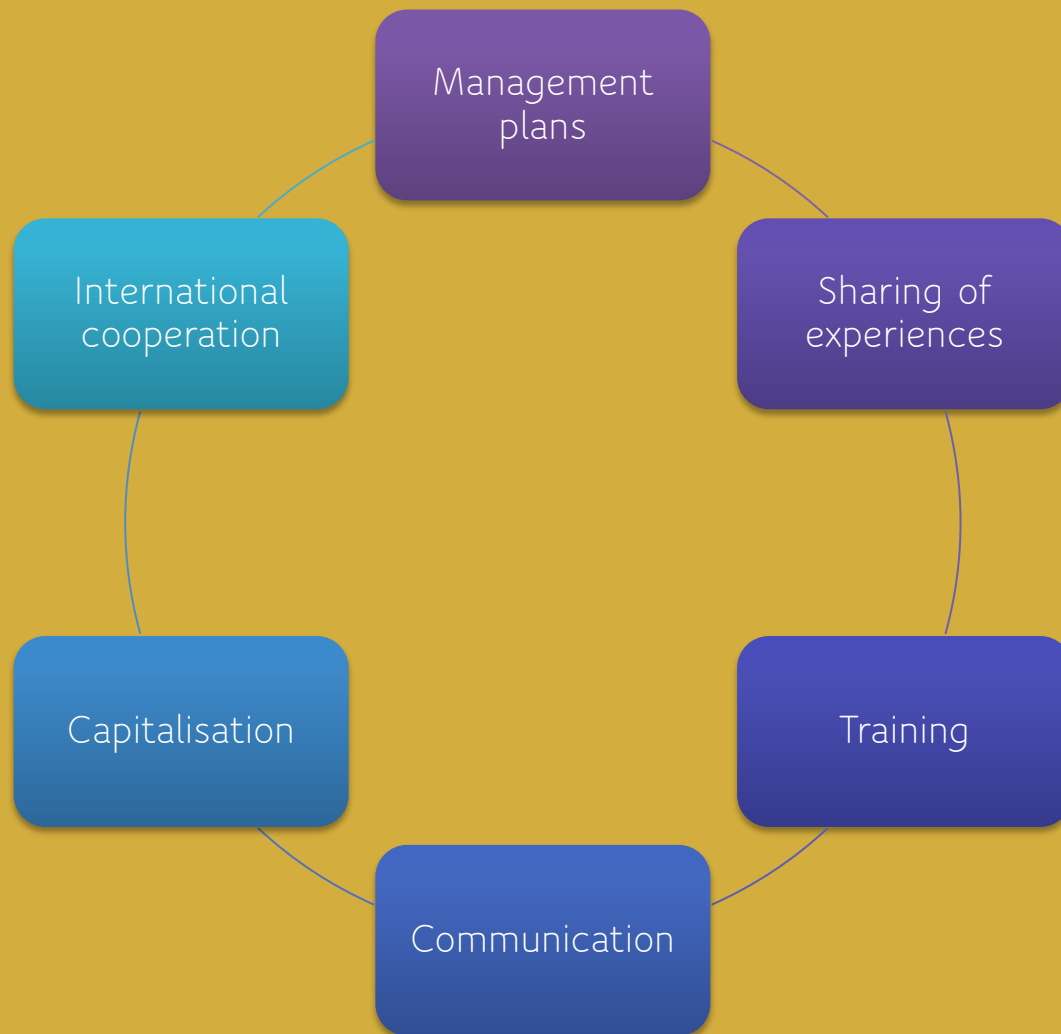




OUR MOTTO:  
USING THE COLLECTIVE  
INTELLIGENCE TO  
IMPROVE THE  
MANAGEMENT OF WH  
PROPERTIES

## 6 ORIENTATIONS TO MEET A SINGLE AMBITION:

to support the manager in his daily practice to enable him to strengthen his skills and improve the preservation and enhancement of his World Heritage site





# ORIENTATION 1: SUPPORT FOR MANAGERS IN IMPLEMENTING MANAGEMENT PLANS

## DIFFERENT COMMITTEES/WORKING GROUPS:

- Sustainable Development
  - Climate change
  - Tourism
- Mediation/Interpretation
- International Relations
  - Governance
- Values and Ethical Issues
  - Communication
- Manager's rights and duties



## ORIENTATION 2 : ENABLE THE SHARING OF EXPERIENCES BETWEEN NETWORK MEMBERS AND THEIR PARTNERS

ORGANISATION OF ANNUAL MEETINGS AND  
TECHNICAL SEMINARS:

- Annual meetings (open to all members in a different location each year)
  - Technical seminars, in response to members' needs
  - Specific annual meetings for urban planners, communication officers and interpretation officers
- Webinars ICCROM-ABFPM (EOH 2.0/ Impact assessment)



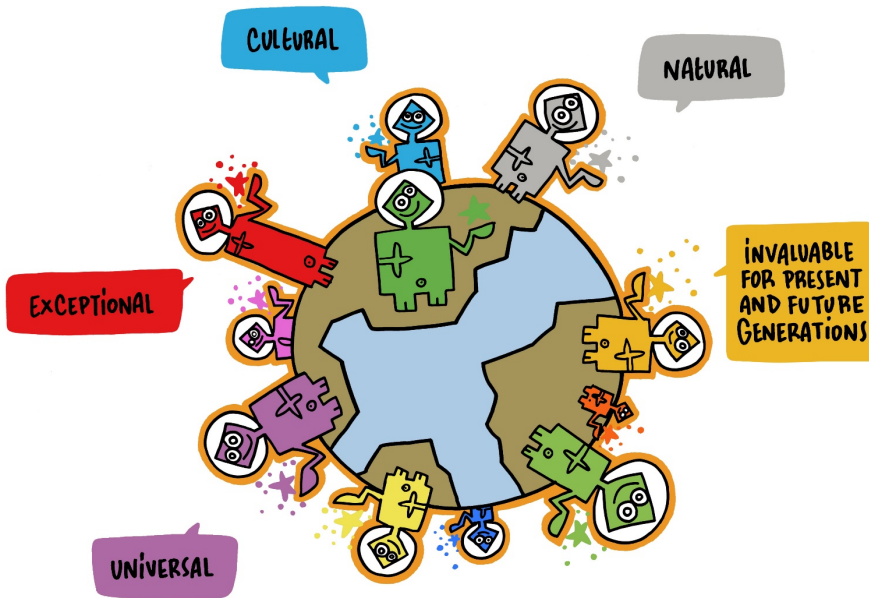
## ORIENTATION 3 : TRAINING ACTIONS FOR THE MEMBERS OF THE ASSOCIATION AND THEIR PARTNERS

TRAINING ACTIONS:

- World heritage mediation/interpretation (annual training/tutoring)
- World heritage teams
- Awareness raising/information

## ORIENTATION 4 : COMMUNICATION AND PROMOTION OF THE VALUES OF THE WORLD HERITAGE CONVENTION

- Updating communication documents
- Continuing to promote the network's activities
- Finalisation of the 'Draw me a VIEW' project
- World Heritage Emblem: towards the adoption of a user's guide French National Commission for unesco/Ministries/ABFPM
- Atout France (France's tourism development agency) collaboration : « DIGITAL Destinations »





**UNE INGÉNIERIE CIVILE EXCEPTIONNELLE!**

TECHNOLOGIE

ESTRÉISME

ALIMENTATION EN EAU DEPUIS LA MONTAGNE NOIRE

Toulouse + Garonne

**ÉVOLUTION TECHNOLOGIQUE**

REVOLUTION INDUSTRIELLE

TECHNOLOGIE CONTEMPORAINE

GÉNIE CIVIL HYDRAULIQUE

LE GRAND XVII<sup>E</sup>

**L'HISTOIRE DES COMMUNAUTÉS RELIGIEUSES CISTÉRCIENNES!**

TRAVAIL & PRIÈRE

AUTARCIE

EAU

CULTURES

UNIVERSSEL!

ARCHITECTURE MONUMENTALE

**UN PANORAMA ARCHITECTONIQUE & ARCHITECTURAL EXCEPTIONNEL!**

DU MOYEN ÂGE À NOS JOURS...

RENDONNÉS, ÉCHANGES

LE CŒUR DES SAIRIES EN OCCIDENT

DANS LE PAS DE CHARLES

DANS LE SILLON DE LA VOIE

**LE PÈLERINAGE**

RELIGIONS

SACRÉ

RENCONTRES

ENRICHISSEMENT CULTUREL

DEVOTION

DIAPHRAGME

ABBAYE

CLÔTURE

SANCTUAIRE

CHAUFFEUR

INTÉRIEUR

LE MODÈLE DANS TOUS

UNIVERSSEL!

**TOUTES LES ÉTAPES GÉOLOGIQUES D'UN RIFTE RÉUNIES EN UN**

EMPS LONGS

PUREUR & EFFONDREMENT DE LA CROÛTE TERRESTRE (RIFT)

FAÏLLE DE LIMAGNE (35 MILLIONS D'ANNÉES)

VOLCANISME ANCIEN

L'IMAGNE (25-45 MILLIONS D'ANNÉES)

SOULEVEMENT

VOLCANISME RÉCENT

CHAÎNE DES PUY (95000 - 8600 ANS)

NOS PAYSAGES TERRESTRES FAÇONNÉS PAR LES MOUVEMENTS TECTONIQUES!

UN PROCESSUS EN COURS!

**XII<sup>E</sup> → XX<sup>E</sup> SIÈCLE**

PRISON

CHARIOT

OFFRE DE TOURISME

ADMINISTRATION COMMUNALE

ADAPTATION AUX USAGES

TOUR DE CRET

**DIVERSITÉ DES STYLES**

**EXCEPTIONNEL!**

**ALLEZ! ON VA PAS SE FAIRE PIQUER NOTRE PLACE!**

**LES BEFFROIS: 3<sup>E</sup> POUVOIR FACE AUX CLOCHERS & DONJONS**

**CLIMAT = 1 PARCELLE = 1 VIN**

UN MODÈLE DE VITICULTURE UNIQUE AU MONDE: + DE 4200 CLIMATS!

UN PATRIMOINE BÂTI, LIÉ À LA CULTURE DE LA VIGNE

COVES

**LES CLIMATS DU VIGNOBLE DE BOURGOGNE UN PAYSAGE CULTUREL EXCEPTIONNEL!**

**L'ŒUVRE CONJUGÉE DE L'HOMME & DE LA NATURE**

VIÈS SIÈCLE

AUJOURD'HUI

CONNAISSANCE DES TERROIRS

TRANSMISSION

PRATIQUES HISTORIQUES

UN VIGNOBLE, UNE INSCRIPTION DE L'HISTOIRE DES HOMMES DANS LE SOL ET LE PAYSAGE

**UNIVERSSEL!**



21<sup>es</sup> Rencontres annuelles de l'ABFPM

**Revue de projets n°6**

2024

## ORIENTATION 5 : CAPITALISATION OF EXPERIENCES AND KNOWLEDGE PRODUCED BY THE NETWORK

CAPITALISING ON THE EXPERIENCE OF  
MANAGERS:

- o Annual publication of case studies/methodological sheets
- o Extranet/resource center
- o Seminar proceedings



## ORIENTATION 6 : STRENGTHEN THE EUROPEAN AND INTERNATIONAL DIMENSION

- ENCOURAGE INTERNATIONAL COOPERATION
- Follow-up work with the network of European World Heritage Associations
  - Participation in international managers' meetings (we are sites managers, Malaysia)
  - Specific support to the Lao People's Democratic Republic



©OLIVIER SAMPSON POUR L' ABFPM

Thank you !